

## USH5016-DXB

### 16-Port 10/100M 8.5" Ethernet Switch

#### High Performance Desktop Switch for Workgroup Networking



#### FEATURES

- 16 X 10/100Mbps Ethernet desktop switched ports
- Fully compliant with IEEE802.3, IEEE802.3u, and IEEE802.3x standards
- All ports support auto MDI/MDI-X cable detection
- Store-and-Forward packet switching optimizes data transfers
- Supports NWay protocol for speed (10/100Mbps) and duplex mode (Half/Full) detection
- Express speed up to 200Mbps at full-Duplex mode
- Efficient up to 8K MAC entries and 160K byte buffer memory
- Compatible with all major network operating systems
- Includes 10" mounting bracket for integration in 10" cabinet ( 19" bracket is optional )
- Easy-to-read LEDs provide instant operating feedback
- Auto-detecting 100-240VAC, 50/60Hz power supply

#### PACKAGE CONTENTS

- One 16-port Ethernet Switch
- One User's Manual
- One AC Power Cord
- One Set of 10" Mounting Bracket and Screws

#### OVERVIEW

The device is a powerful, high performance Fast Ethernet switching hub, with all 16 ports capable of 10 or 100M auto-negotiation operation (NWay) which means the switch could automatically negotiate with the connected partners on the network speed and duplex mode. It is ideal for micro-segmenting large networks into smaller, connected subnets for improved performance, enabling the bandwidth demanding multimedia and imaging applications. Moreover, the 10/100M auto-sensing ability provides an easy way to migrate 10M to 100M networks with no pain.

Compared to the shared 10M or 100M networks, the NWay switch delivers a dedicated 10/100M connection to every attached client with no bandwidth congestion issue. Store-and-forward switching mode promises the low latency plus eliminates all the network errors, including runt and CRC error packets. To work under full-duplex mode, transmission and reception of the frames can occur simultaneously without causing collisions as well as double the network bandwidth.

The switch is plug-and-play without any software to configure and also fully compliant with all kinds of network protocols. Moreover, plenty of diagnostic provide the operating status of individual port and whole system.

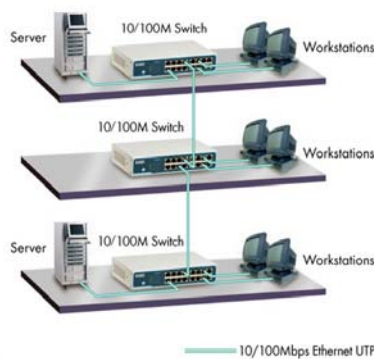
A built-in switching power supply is suitable for universal power line AC source. Without external power adapter, it makes your installation environment clean and easier for power cable management. USH5016-DXB is also provides 10" or 19" bracket for installing on the 10" or 19" Rack Cabinets.

## SPECIFICATIONS

System Specifications	
Ethernet Standard	IEEE802.3 10BASE-T for 10Mbps IEEE802.3u 100BASE-TX for 100Mbps IEEE802.3x Full duplex operation and flow control
Interface	16 * 10/100Mbps RJ-45 Ethernet ports
Uplink	Auto MDI/MDI-X ( Auto Crossover ) on all ports
Network Speed	Nway CSMA/CD protocol for 10/100Mbps Auto-Sensing Speed
Transmission Mode	Full Duplex: 20Mbps or 200Mbps Half Duplex: 10Mbps or 20Mbps
Throughput	Wire-speed Packet Filtering and Forwarding Rate 10Mbps: 14,880pps/14,880pps 100Mbps: 148,800pps/148,800pps
Switch Function	Store-and-Forward Architecture Filters Fragment & CRC Error Packets
Memory	160K bytes Buffer Memory; 8K MAC Address
Cable Type	10Mbps: UTP/STP Category 3 or Better, Max. 100Meters 100Mbps: UTP/STP Category 5 or Better, Max. 100Meters
Diagnostic LED	System: Power Link/Act: 10Mbps; 100Mbps
Installation	8.5" Desktop, 10" Rackmount (10" Bracket Included ), 19" Rackmount ( Option )
Operating Temperature	0° ~ 40°C (32° ~ 104°F)
Operation Humidity	10% ~ 90% (non-condensing)
Dimension	216 (L) x 133 (W) x 42 (H) mm
Weight	870g (Net)
Power Supply	100~240V AC, 50-60Hz, Internal Universal Switching Power Supply
Emission Certification	CE, FCC Class A

## Application Diagram

16-Port 10/100Mbps Ethernet Switch Diagram



The 10/100Mbps Nway Switch is auto speed sensing for any Ethernet devices.  
All of its RJ-45 STP ports can be used for devices or uplink to other switches.

## ORDERING INFORMATION

Model	Description
USH5016-DXB	16-port 10/100M 8.5" Nway Switch with 10" Bracket ( 19" Bracket Optional )

*EUSSO Technologies, Inc. is a dedicated data communication and networking company. With professional experiences in design, production, marketing and service support, we deliver the full range networking products including Gigabit Ethernet, Fiber Optic, Wireless LAN, Switches, Hubs, LAN cards, PCMCIA adapters, Converter, Transceivers. As well as Internet Telephony Gateway, Print Servers, Internet Sharing Servers and many others.*

2006/10/26 ver 1.0



**EUSSO Technologies, Inc.**

6F, No.389, Sec.2, Chung Shan Road, Chung Ho City, Taipei 235-58, Taiwan

TEL:+886 (2) 8221-4616 E-mail:sales@eusso.com

FAX:+886 (2) 8221-4607 <http://www.eusso.com>