

FEATURES:

- Meeting the TIA/EIA-568-B.2 category 5e, ISO/IEC11801 and EN50173-1 specification.
- Supports T568 A&B wiring & easy Installation.
- Dual IDC connector can accept 22-26 AWG solid and stranded cables.
- Interoperable and backward compatible to category 5 or 3.
- Offers total solution of your local Network area.
- All versions can be mounted on 19" EIA racks.



CHARACTERISTICS:

***Panel:**

Item	Material	Thickness	Plated	Dimensions and Mounting
Panel	SECC	1.5mm	Painted black	EIA – 310-D

***IDC Connector:**

Item	Material or Feature
Operating life	Minimum 250 Re-terminations
Contact Material	Phosphor bronze
IDC Contact Plating	Tin plated over Nickel
IDC Plastic Housing	PC, UL94V-0

***Jack Connector:**

Item	Material or Feature
Operating life	Minimum 750 insertions
Contact Material	Phosphor bronze
Jack Contact Plating	50µ inch thickness gold over Nickel

Jack Plastic Housing	Glass filled polyester UL94V-0
----------------------	--------------------------------

***Printed Circuit Board:**

Item	Material or Feature
Materials	FR-4
Thickness	1.6mm

***Accessories:** Cable ties, M6x12 screws.

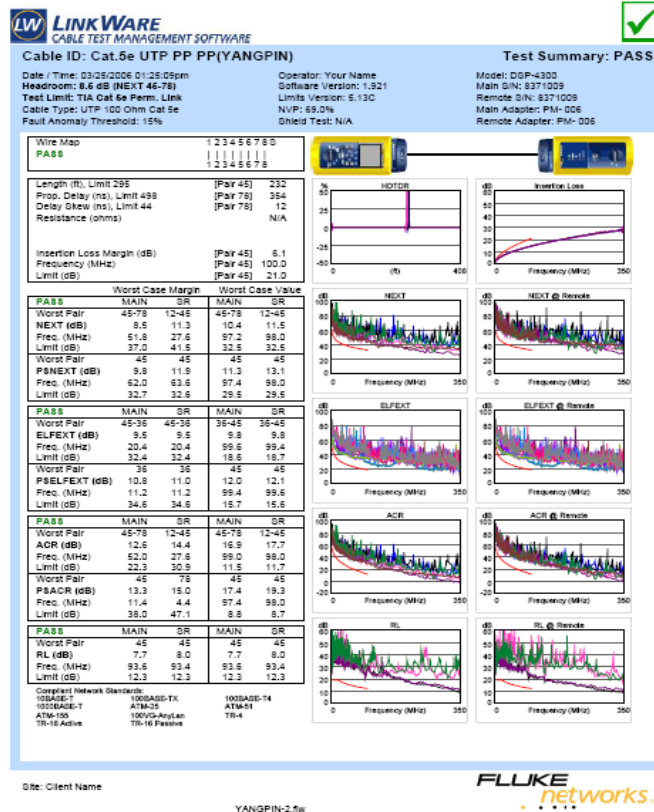
APPROVAL:

- ETL certified TIA/EIA-568-B.2 category 5e channel testing performance requirement
- 3P certified TIA/EIA-568-B.2 category 5e channel testing performance requirement

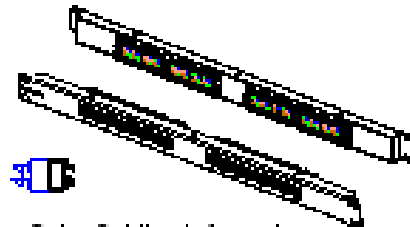
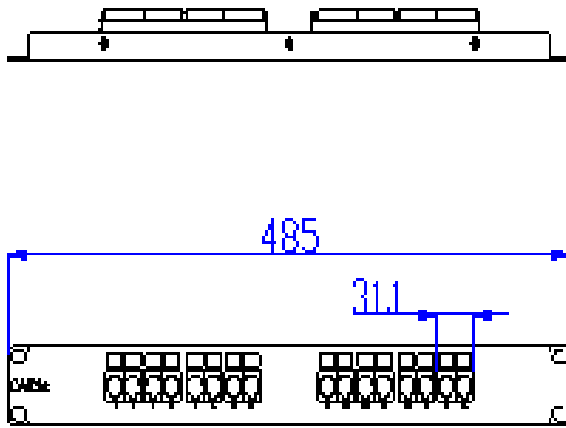
APPLICATIONS

- 1000BASE-T Gigabit Ethernet.
- 100BASE-Tx Fast Ethernet.
- 10BASE-T Ethernet.
- Voice, Video and other applications.

TYPICAL PERFORMANCE:



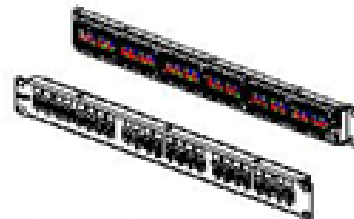
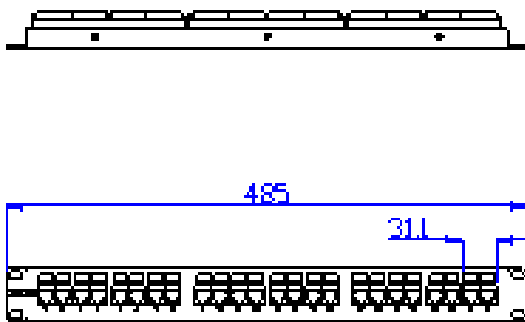
DRAWING:



Color Coding Information

T568B		T568A	
IDC Contact	Color Code	IDC Contact	Color Code
#1 Pin	WH/BK/BL/BR	#1 Pin	WH/BR/BL/BR
#2 Pin	BL/BR	#2 Pin	BL/BR
#3 Pin	WH/BR/GR/BR	#3 Pin	WH/BR/GR/BR
#4 Pin	OR/GR	#4 Pin	OR/BR
#5 Pin	WH/BR/GR/BR	#5 Pin	WH/BR/GR/BR
#6 Pin	OR/BR	#6 Pin	OR/GR
#7 Pin	WH/BR/GR/BR	#7 Pin	WH/BR/GR/BR
#8 Pin	BR/GR	#8 Pin	BR/GR

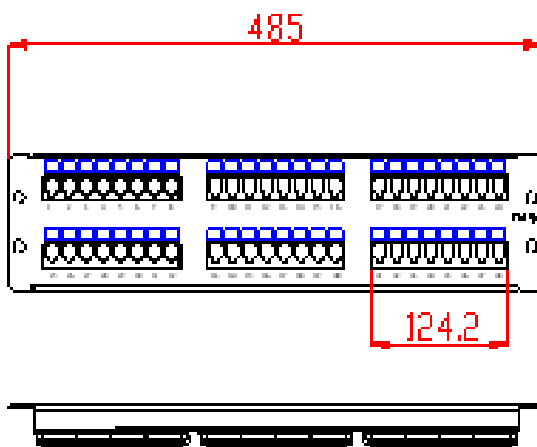
16-port⁴⁾



Color Coding Information

T568B		T568A	
IDC Contact/Color Code	IDC Contact/Color Code	IDC Contact/Color Code	IDC Contact/Color Code
Pin 5	WH/BL/BLAC	Pin 5	WH/BL/BLAC
Pin 4	BL/BL	Pin 4	BL/BL
Pin 3	WH/BL/GR/BR/BR	Pin 3	WH/BL/GR/BR/BR
Pin 2	OR/GR	Pin 2	OR/GR
Pin 1	WH/BL/GR/BR/BR	Pin 1	WH/BL/GR/BR/BR
Pin 8	OR/BL	Pin 8	OR/BL
Pin 7	WH/BL/GR/BR/BR	Pin 7	WH/BL/GR/BR/BR
Pin 6	BR/BL	Pin 6	BR/BL

24-port⁴⁾



Color Coding Information

T568B		T568A	
IDC Contact/Color Code	IDC Contact/Color Code	IDC Contact/Color Code	IDC Contact/Color Code
Pin 1	WH/BL/BLAC	Pin 1	WH/BL/BLAC
Pin 2	WH/BL/GR/BR/BR	Pin 2	WH/BL/GR/BR/BR
Pin 3	OR/GR	Pin 3	OR/GR
Pin 4	WH/BL/GR/BR/BR	Pin 4	WH/BL/GR/BR/BR
Pin 5	OR/BL	Pin 5	OR/BL
Pin 6	WH/BL/GR/BR/BR	Pin 6	WH/BL/GR/BR/BR
Pin 7	BR/BL	Pin 7	BR/BL
Pin 8	OR/BL	Pin 8	OR/BL

48-port⁴⁾

ORDERING INFORMATION:

Part NO. 17512xx12
Description Premium-Line Cat.5e 180° unshielded patch panel, dual type IDC, black
xx, port no 16: 16ports 24: 24ports 32: 32ports 48: 48ports