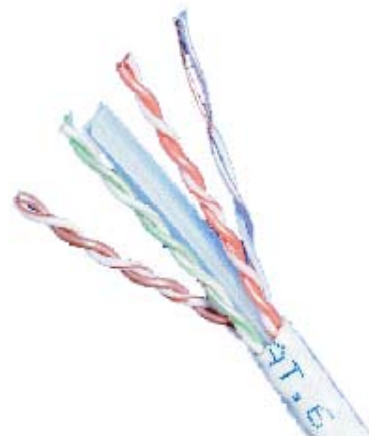


FEATURES:

In compliance with all category 6 requirements as per ANSI/TIA/EIA, ISO/IEC and CENELEC EN Standards.

- ANSI/TIA/EIA 568-B.2-1
- ISO/IEC 11801 CLASS E, 2nd Edition
- IEC 61156-6
- CENELEC EN 50173-1
- CENELEC EN 50288-5-1,
- CENELEC EN50288-5-2
- Flame retardancy is verified according to IEC 60332-1-2. █

We implemented RoHS compliance for the requirement of European Union issued Directive 2002/95/EC



CHARACTERISTICS:

➤ Configuration & Physical Character

1. Conductor	Material	Bare Copper	
	Size	23 AWG	
	Construction	1/0.56 ± 0.02 mm	
2. Insulation	Material	HDPE	
	Thickness	Average: 0.22m	Min. at any point: 0.12mm
	Diameter	1.00 ± 0.1 mm	
	Colors	Blue/White-Blue	Orange/White-Orange
		Green/White-Green	Brown/White-Brown
	Elongation	Min. 300 %	
Tensile strength	Min. 1.682 Kg/mm ²		
3. Sheath	Material	PVC	LS0H
	Thickness	Average: 0.50 mm	Average: 0.50 mm
		Min. at any point: 0.40 mm	Min. at any point: 0.40 mm
	Diameter	6.3 ± 0.3 mm	6.3 ± 0.3 mm
	Color	Assorted upon request	Assorted upon request
Elongation	Min. 100%	Min. 125%	

	Tensile strength	Min. 1.407 Kg/mm ²	Min. 0.917 Kg/mm ²
	Aging at 100°C for 168Hrs	Min. elongation retention:50%	Min. elongation retention:75%
		Min. tensile strength retention:75%	Min. tensile strength retention:70%
	Flame Test	Or as customer request.	
Burning five times, every time is less than 60 second and paper flag can't be burned.			

➤ **Electrical Characters**

Spark Test	2000 ± 250 V ac
Dielectric Strength	2500 V dc / 3 seconds
Insulation Resistance Test	Min. 150 MΩ/Km
Conductor Resistance	Max. 9.38 Ω/100m at 20°C
Resistance Unbalance	Max. 2%
Capacitance Unbalance	Max. 160 pF/100m
Mutual Capacitance	Max. 5600 pF/100m

Remark: The product has no voltage itself and is used for products DC less than 30V.

APPROVAL:

- 3P certified ANSI/TIA/EIA-568-B.2-1 category 6 testing performance requirements
- ETL certified ANSI/TIA/EIA-568-B.2-1 category 6 testing performance requirements.

APPLICATIONS:

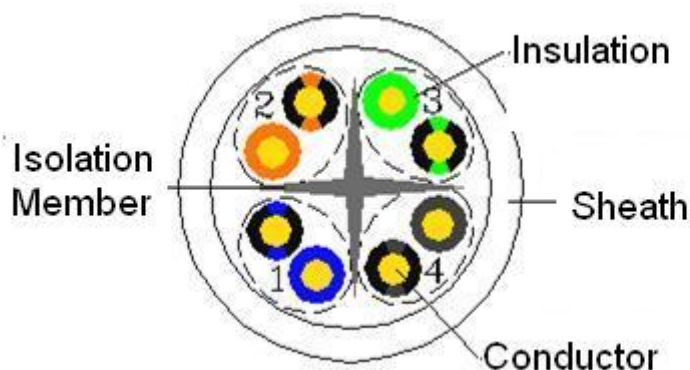
- 10GBASE-T Ethernet
- 100BASE-TX Fast Ethernet
- 1000BASE-TX Gigabit Ethernet
- 10BASE-TX Ethernet
- ATM CB1G
- 155/622 Mbps ATM
- 1000BASE-T Gigabit Ethernet
- 100 Mbps TP-PMD
- 100VG-AnyLAN
- 4/16 Mbps Token Ring
- Voice



ELECTRICAL PERFORMANCE:

	Frequency (MHz)	Insertion Loss (dB/100M)		Next (dB)		PS NEXT (dB)	
		Normal	Typical	Normal	Typical	Normal	Typical
Attenuation & Near end cross-talk	1MHz	2.0	1.8	77.3	87.3	75.3	82.3
	4 MHz	3.8	3.5	68.3	78.3	66.3	73.3
	10 MHz	5.9	5.6	62.4	72.4	60.3	67.3
	16 MHz	7.5	7.1	59.2	69.2	57.2	64.2
	20 MHz	8.4	7.9	57.8	67.8	55.8	62.8
	31.25MHz	10.6	10.0	54.9	64.9	52.9	59.9
	62.5MHz	15.2	14.4	50.4	60.4	48.4	55.4
	100.0MHz	19.6	18.7	47.3	57.3	45.3	52.3
	160.0 MHz	25.4	24.1	44.2	54.2	42.3	49.2
	200.0 MHz	28.7	26.8	42.9	52.8	40.8	47.8
	250.0 MHz	32.6	30.5	41.3	51.3	39.3	46.3

DRAWING:



ORDERING INFORMATION:

Part NO. 20614x115
 Description Premium-Line category 6 UTP Installation cable, 305m boxes, gray
 x: jacket material 1:PVC 2:LSOH



Premium-Line Systems GmbH. Rosenheimer Str.89 D-83064 Raubling. Germany

► TEL:+49(0)8035 9836 0 ► Fax:+49(0)8035 9836 22

*Picture for reference only